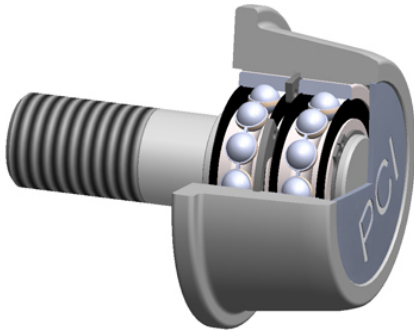




Sealmaster BEARING LTD



PCI Procal Inc. CIR-3.00E Flanged Cam Followers

Bearing No. CIR-3.00E

roller diameter:	2.5625 in
roller shape:	Channel & I-Beam
roller width:	1.6875 in
closure type:	Double Seal
stud diameter:	0.8750 in
point diameter:	2.9400 in
thread size:	7/8-14
radial dynamic load capacity:	3820 lbs
stud length:	2.0000 in
radial static load capacity:	2140 lbs
roller material:	Chrome Steel
technical specifications:	Click here
bearing element:	Balls - Two Rows

CIR-3.00E Bearing 2D drawings and 3D CAD models