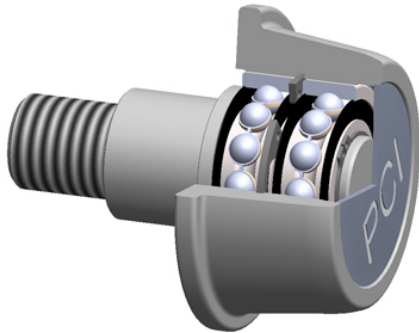




Sealmaster BEARING LTD



PCI Procal Inc. CIRE-3.00 Flanged Cam Followers

Bearing No. CIRE-3.00

roller diameter:	2.5625 in
roller shape:	Channel & I-Beam
roller width:	1.1875 in
closure type:	Double Seal
stud diameter:	0.8750 in
point diameter:	2.9400 in
thread size:	5/8-18
radial dynamic load capacity:	2750 lbs
stud length:	1.5000 in
radial static load capacity:	1394 lbs
roller material:	Chrome Steel
technical specifications:	Click here
bearing element:	Balls - Two Rows

CIRE-3.00 Bearing 2D drawings and 3D CAD models